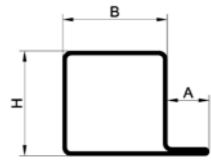


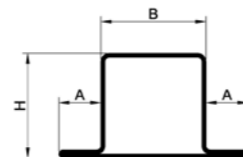
RP-profiles

RP-Rohr® is a registered trademark, included in the Welsper-group. RP profiles are well known for their high quality and accuracy, which matches our ambition to supply high quality products. Heléns has exclusive marketing rights for RP profiles in Sweden and the Baltic states. RP-Technik's wide assortment suits the requirements of our innovative customers.

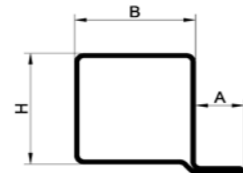
RP-profiles can be found in many different branches, e.g. automotive, machine construction, furniture, material handling, etc. The profiles are made from pickled hot strip in quality S235JRG2 in lengths of 6000 mm +50/-0 mm. Most dimensions can also be obtained in galvanized or stainless (W. 1.4301). Other special materials, surface finish, odd length requirements, fixed lengths, can be accommodated.



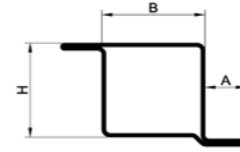
Prod. id	Weight Kg/m	H	B	A	t
144	1,99	34	20	15	2.0
106	2,46	34	35	15	2.0
1191	2,93	34	50	15	2.0
104	3,09	34	55	15	2.0
1092	4,50	34	100	15	2.0
1114	2,18	40	20	15	2.0
1008	2,81	40	40	15	2.0
1049	3,43	40	60	15	2.0
1087	3,75	40	70	15	2.0
116	4,06	40	80	15	2.0
1692	2,33	40	20	20	2.0
1672	2,40	40	30	20	1.8
1683	2,96	40	40	20	2.0
1673	3,24	40	60	20	1.8
1679	3,90	40	70	20	2.0
197	2,65	50	20	20	2.0
1072	3,28	50	40	20	2.0
1810	3,59	50	50	20	2.0
1688	4,85	50	90	20	2.0
1647	2,96	60	20	20	2.0
1592	3,95	60	40	20	2.0
1645	3,90	60	50	20	2.0
1593	6,01	80	60	20	2.5



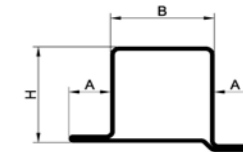
Prod. id	Weight Kg/m	H	B	A	t
143	2,45	34	20	15	2.0
105	2,92	34	35	15	2.0
1050	3,08	34	40	15	2.0
103	3,39	34	50	15	2.0
150	3,55	34	55	15	2.0
1266	4,96	34	100	15	2.0
185	2,64	40	20	15	2.0
152	3,27	40	40	15	2.0
1693	2,95	40	20	20	2.0
1684	3,58	40	40	20	2.0
1690	4,52	40	70	20	2.0
193	3,27	50	20	20	2.0
1070	3,89	50	40	20	2.0
1811	4,21	50	50	20	2.0
1689	5,46	50	90	20	2.0
1596	4,21	60	40	20	2.0
1646	4,52	60	50	20	2.0
1597	6,76	80	60	20	2.5



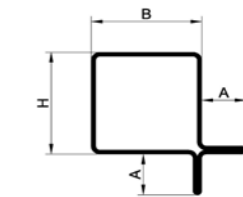
Prod. id	Weight Kg/m	H	B	A	t
133	2,57	34	35	15	2.0
114	3,20	34	55	15	2.0
1640	3,07	40	40	20	2.0
1628	3,39	40	50	20	2.0
1613	2,99	40	40	17.5	2.0
1348	3,91	40	70	17.5	2.0



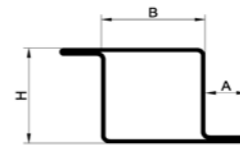
Prod. id	Weight Kg/m	H	B	A	t
169	2,45	34	20	15	2.0
139	2,92	34	35	15	2.0
111	3,39	34	50	15	2.0
112	3,50	34	50	15	2.0
138	3,02	34	35	15	2.0
1163	2,64	40	20	15	2.0
1162	3,27	40	40	15	2.0
1685	3,58	40	40	20	2.0
1680	3,68	40	40	20	2.0
195	3,27	50	20	20	2.0
1071	3,89	50	40	20	2.0
1812	4,21	50	50	20	2.0
1594	4,21	60	40	20	2.0
1595	6,78	80	60	20	2.0



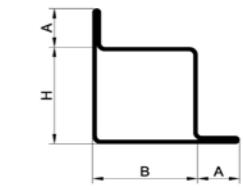
Prod. id	Weight Kg/m	H	B	A	t
140	3,03	34	35	15	2.0
113	3,50	34	50	15	2.0
1639	3,69	40	40	20	2.0
1615	3,45	40	40	17.5	2.0
1093	4,37	40	70	17.5	2.0
1682	3,99	50	40	20	2.0
1598	4,32	60	40	20	2.0
1600	6,94	80	60	20	2.5



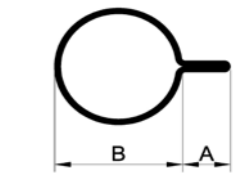
Prod. id	Weight Kg/m	H	B	A	t
141	2,87	34	34	15	2.0



Prod. id	Weight kg/m	H	B	A	t
112	3,50	34	50	15	2.0
138	3,02	35	34	15	2.0
1680	3,68	40	40	20	2.0
1614	3,45	40	40	17.5	2.0
1094	4,37	40	70	17.5	2.0
1681	3,99	50	40	20	2.0
1601	4,32	60	40	20	2.0
1602	6,94	80	60	20	2.5



Prod. id	Weight Kg/m	H	B	A	t
142	2,89	34	34	15	2.0



Prod. id	Weight Kg/m	H	B	A	t
202	1,40	32	15	1.5	